



CENTRAL VALLEY FLOOD PROTECTION BOARD

INFORMATIONAL ITEM 9B

YOLO BYPASS CACHE SLOUGH MASTER PLAN OVERVIEW

April 24, 2026

Presented by:

Kristyne Van Skike, Program Manager, Flood Planning and Programs Branch,
Central Valley Flood Protection Board

Mary Jimenez, Manager, Systemwide Multibenefit Initiatives Branch,
California Department of Water Resources

Yolo Bypass Cache Slough Master Plan Final Draft Release

Central Valley Flood Protection Board

April 24, 2026



DEPARTMENT OF WATER RESOURCES

CENTRAL VALLEY FLOOD PROTECTION BOARD



Today's Presentation

- YBCS Master Plan Purpose
- Developing the Master Plan
- Master Plan Highlights
- Master Plan Recommendations

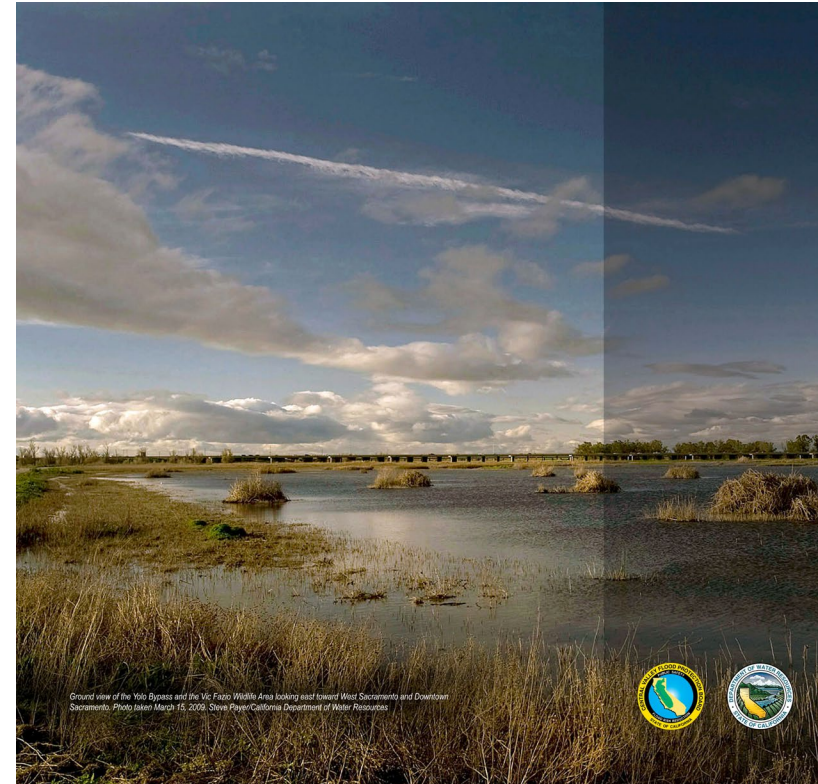


Tides End, Sacramento San Joaquin Delta



YBCS Master Plan Purpose

- ✓ Provides a programmatic planning framework for the YBCS Region
- ✓ Provides hydrologic and hydraulic analysis and an ecosystem baseline
- ✓ Supports the CVFPP
- ✓ Informs the USACE Yolo Comprehensive Study
- ✓ Advances the goals of the YBCS Partnership



YOLO BYPASS CACHE SLOUGH MASTER PLAN

APRIL 2026

STATE OF CALIFORNIA
THE NATURAL RESOURCES AGENCY
DEPARTMENT OF WATER RESOURCES
CENTRAL VALLEY FLOOD PROTECTION BOARD



Developing the YBCS Master Plan

- Developed by DWR and CVFPB, with input from
 - YBCS Partnership representatives
 - California Tribes
 - Other interested parties
 - Public review
- Multiple draft review opportunities
- Aligns with other program and planning efforts in the region



Sacramento Weir 2017



YBCS Master Plan Engagement

2023

Fall
• Admin Draft Development

Winter
• Admin + Appendices Draft Review

2024

Summer
• Comments - Refinement
• Partners + Tribal Engagement

Fall
• 2nd Draft Review
• Board Workshop

2025

Spring
• Board Presentation
• Public Draft Review

Winter
• Final Draft Development
• Focused Briefings

2026

Spring
• Leadership + Executive Review
• Final Draft Published
• Board Presentation



YBCS Master Plan Draft Reviewers

- Delta Protection Commission
- Delta Stewardship Council
- Siegel Environmental
- Solano County
- Solano County Water Agency
- State Water Resources Control Board
- US Bureau of Reclamation
- US Army Corps of Engineers
- Yocha Dehe Wintun Nation
- Yolo Basin Foundation
- Yolo County
- Yolo County Farm Bureau
- Yolo County Resource Conservation District

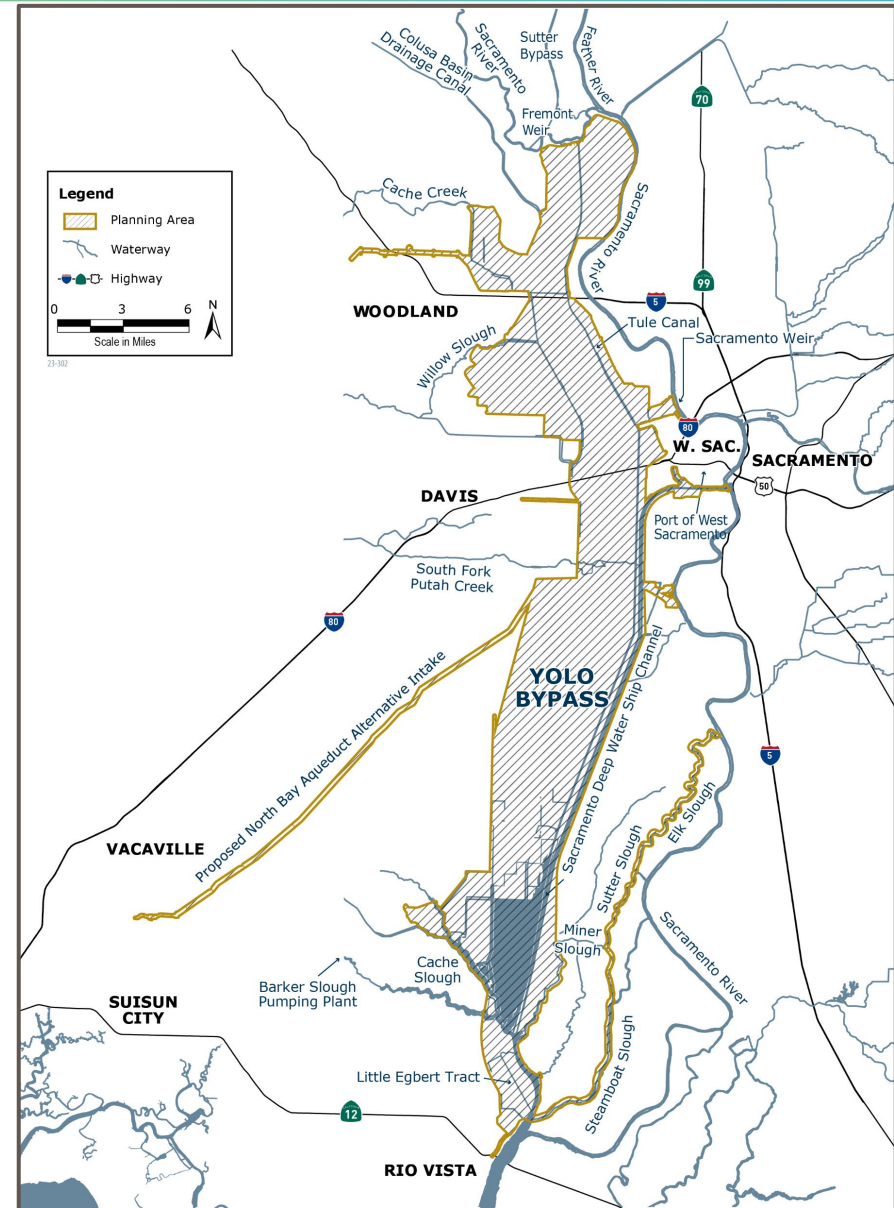
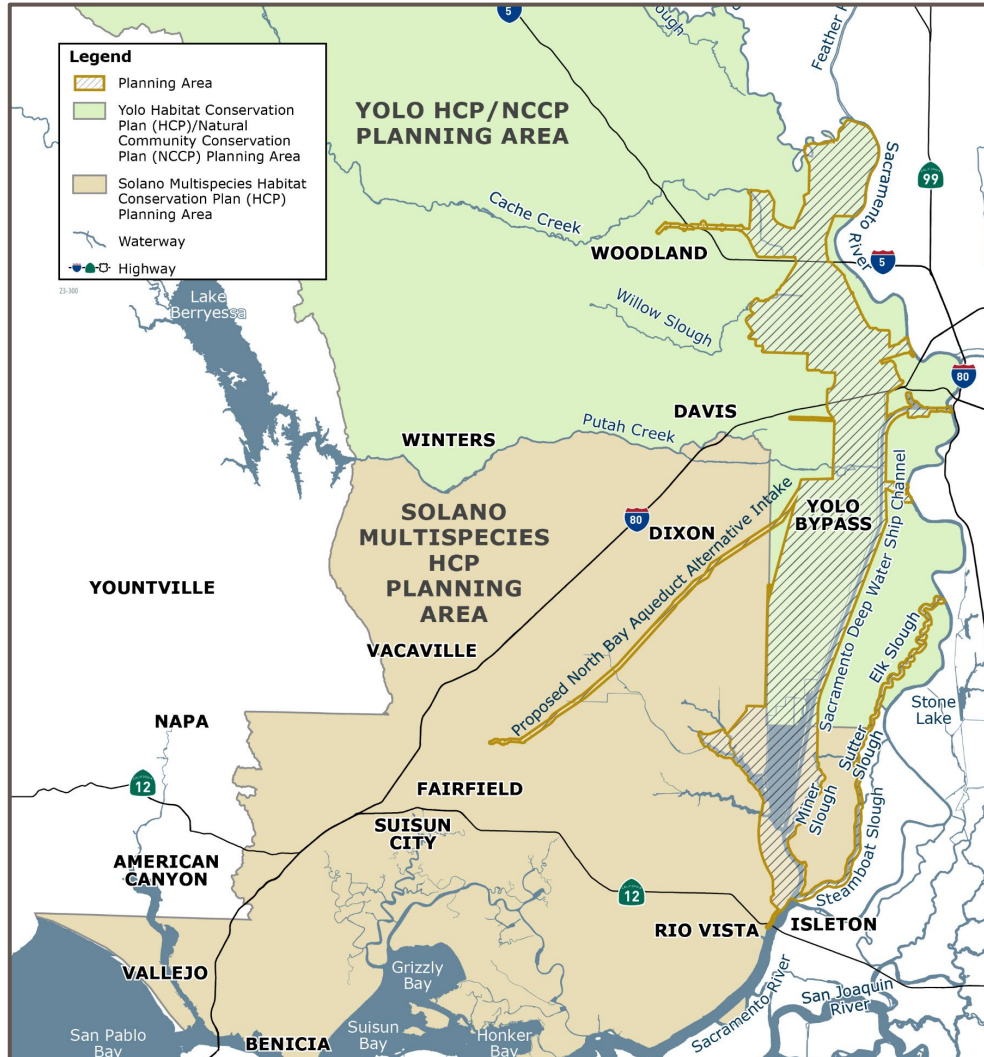


Master Plan Highlights

- Major components of the Sacramento River Flood Control system
- Conveys up to 80% of Sacramento River flows during major flood events
- Critical habitat and water management landscape
- Significant project investments are underway and proposed across the region
- Planning and project efforts affect federal, tribal, state, local, and private interests



YBCS Planning Area



Regional Pressures and Challenges



- Flood risk increasing faster than improvements to aging, constrained infrastructure
- Intensifying climate risk including habitat loss and decline of sensitive species
- Regulatory complexity and the growing costs of inaction
- Need for improved governance, O&M, and funding pathways



Accomplishments to Date

- ✓ **Major projects underway**
 - Big Notch
 - LEBLS
 - Lookout Slough
 - Sacramento Weir Widening
- ✓ **Regional Collaboration**
 - YBCS Partnership
 - RFMP and CVFPP
 - Tribes



Lower Elkhorn Basin Levee
Setback (LEBLS), DWR, 2025



Questions



Tides End Yolo Co. 2024



4

The Path Forward

This Yolo Bypass Cache Slough Master Plan lays the foundation for a resilient future for the region.

YBCS Master Plan Recommendations



YBCS Master Plan Recommendations

- Nine recommendations to guide path forward
- Most recommendations are ongoing; not fully funded
- Framed around Master Plan purpose
 - Inform USACE Yolo Comprehensive Study
 - Guide ongoing project planning and implementation
 - Advance goals of the Partnership

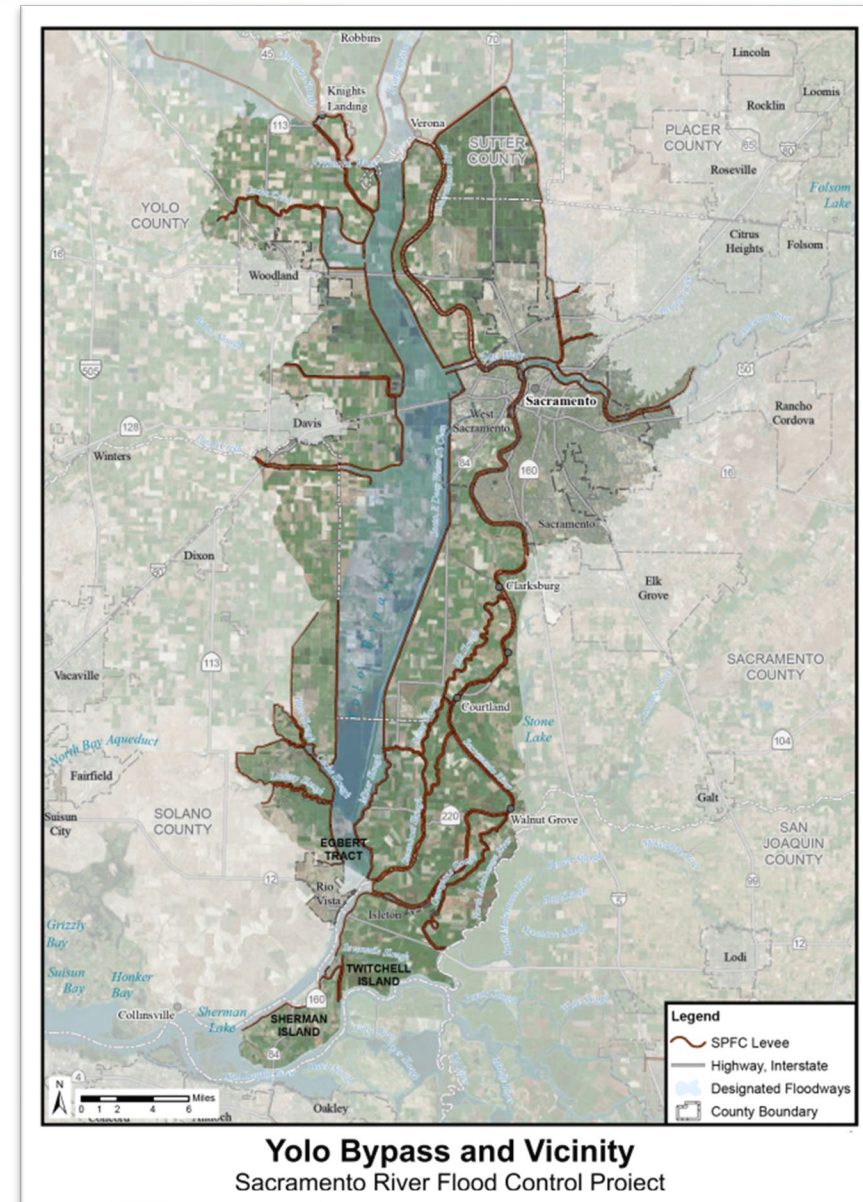


Recommendation 1

Support the USACE Yolo Comprehensive Study

- Share information regularly to inform study through nonfederal sponsors
- Honor Tribal interests
- Develop recommendations to support a phased approach, ongoing coordination and investigations

➤ *In progress*

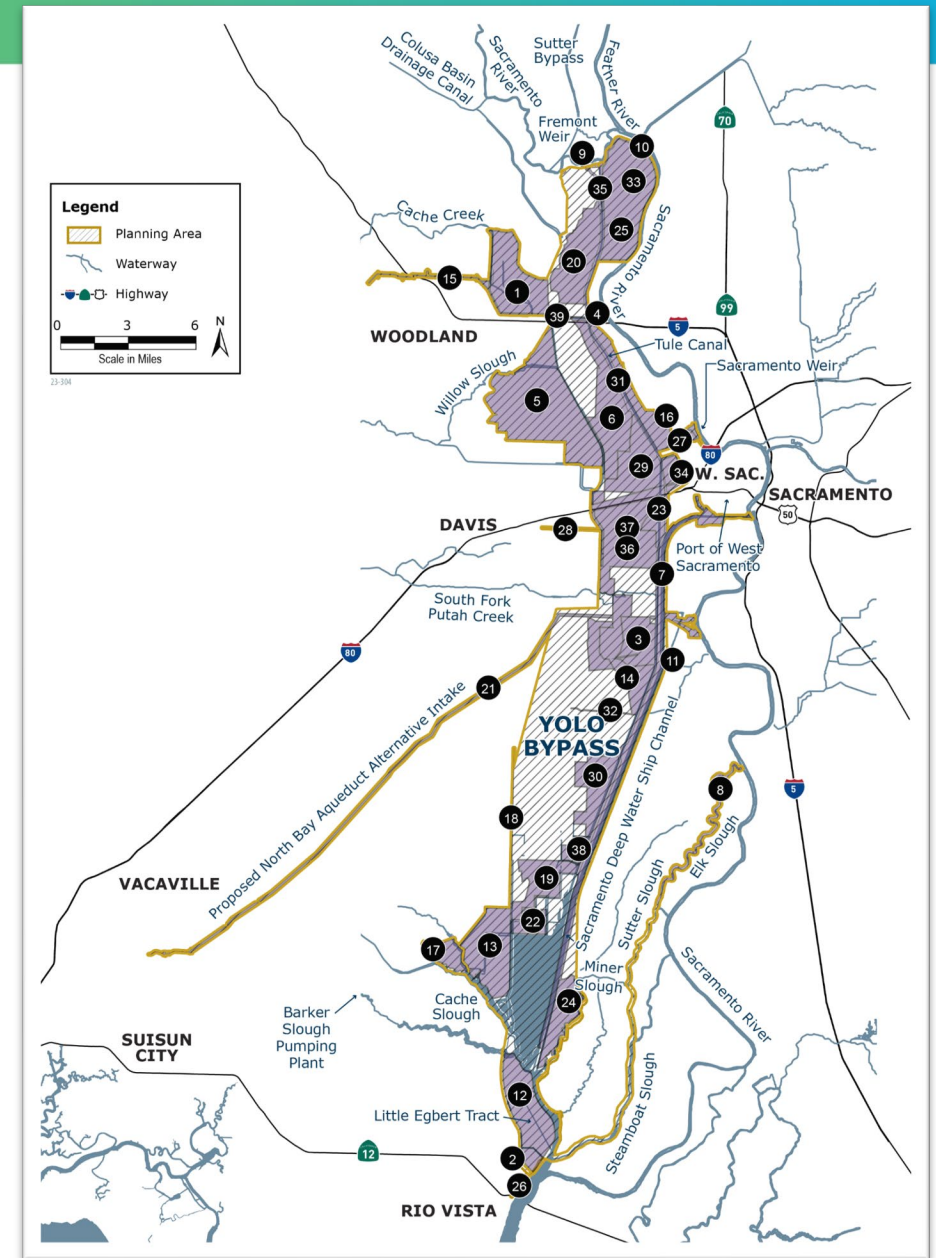


Recommendation 2

Collaboratively identify, prioritize, develop and implement improvements

- Enhance flood protection for urban, rural, small communities, and agricultural lands
- Increase climate resilience and protect vulnerable communities

➤ *In progress*



Recommendation 3

Develop Landscape Scale Permitting Strategies



- Feasibility of initiating regionally-based multi-objective program
- Consider mitigation banks or creating mitigation credits, as appropriate
- Consider MOAs/MOUs

➤ *Not started*



Recommendation 4

Tribal Engagement Guidance

- Apply guidance from the California Water Plan & CNRA Tribal Stewardship Policy
- Include tribal knowledge & cultural resource protection
- Support tribal access and co-management opportunities

➤ *In progress*



Recommendations 5 - 6

Additional Capacity, Strategies, and Funding

- Increase, where possible, and preserve local assessments
- Leverage federal cost shares
- Identify strategies, practices, and funding early for sustainable long-term O&M

➤ *In progress*



Recommendation 7 YBCS Partnership

- Formulate and update an implementation planning document
- Identify metrics and objectives to measure progress
- Incorporate equity, social vulnerability, and community-specific needs
- YBCS Partnership MOU renewal



➤ *Not started*



Recommendation 8 Data and Tools for Analyzing Tradeoffs



Hydrologic and hydraulic data and tools



Ecosystem baseline and accounting data and tools



Economic models and analyses



Agricultural productivity data

➤ *In progress*



Recommendation 9

Encourage and Promote Consistent Activities



Flood



Habitat



Water Quality



Water Supply



Agriculture



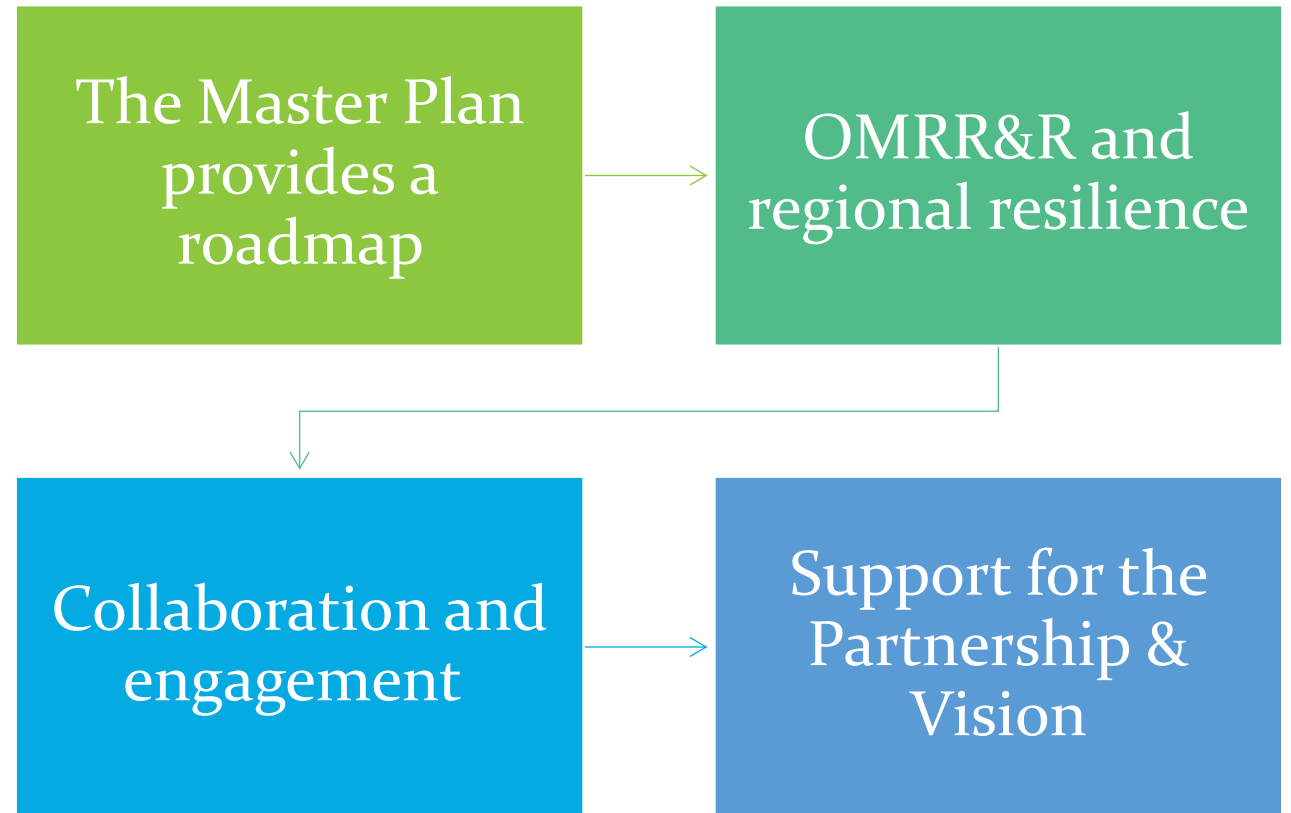
Recreation

“Collaboratively implement a series of integrated projects that provide multiple regional benefits.”

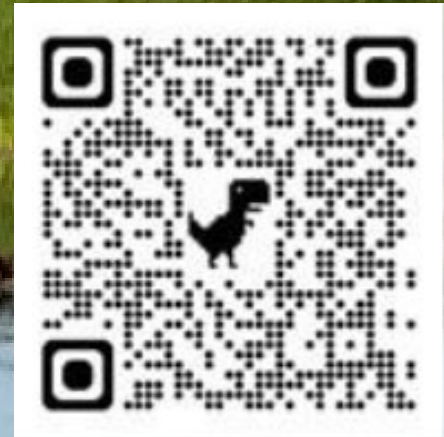
➤ *In progress*



The Path Forward



Yolo Bypass Cache Slough Master Plan



ybcspartnership.org

